



ELASTIC PVC ROOFING

A. D. Global Synergies Private Limited

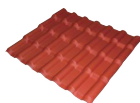


CONTENT



About Us

Technical features and testing reports



Elastic Spanish Roofing Sheet

Elastic ASAPVC Roofing Sheet



Elastic Daylighting Roofing Sheet



Elastic Translucent Roofing Sheet

Accessories

Installation Manual

Applications

Contact us

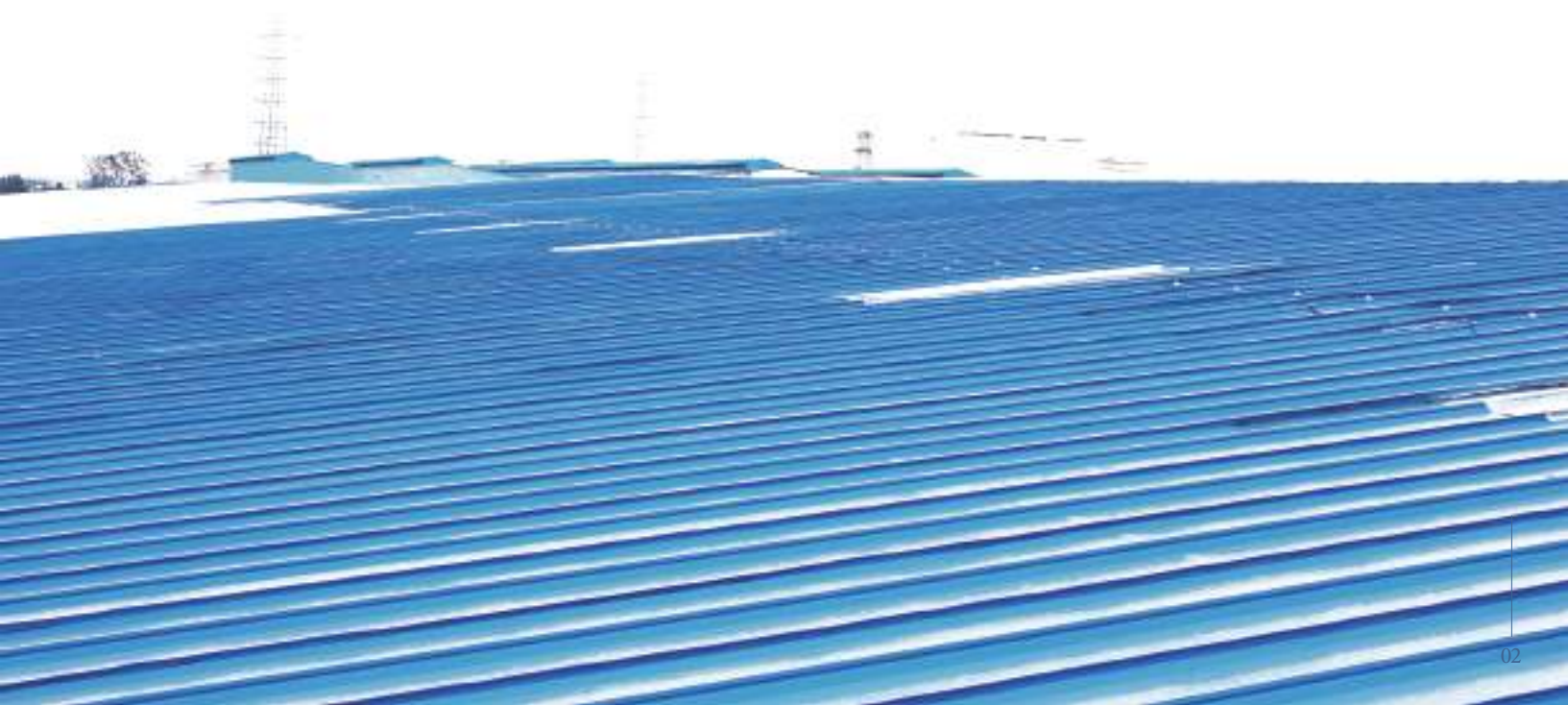
ABOUT US

Since its inception in 2013, A. D. Global Synergies Private Limited has earned its reputation as a leading company in and around the Indian Subcontinent. We pride ourselves on developing smart, high-tech products, always with a sustainable footprint. A global enterprise with core competencies in the fields of PVC profiles and WPC products.

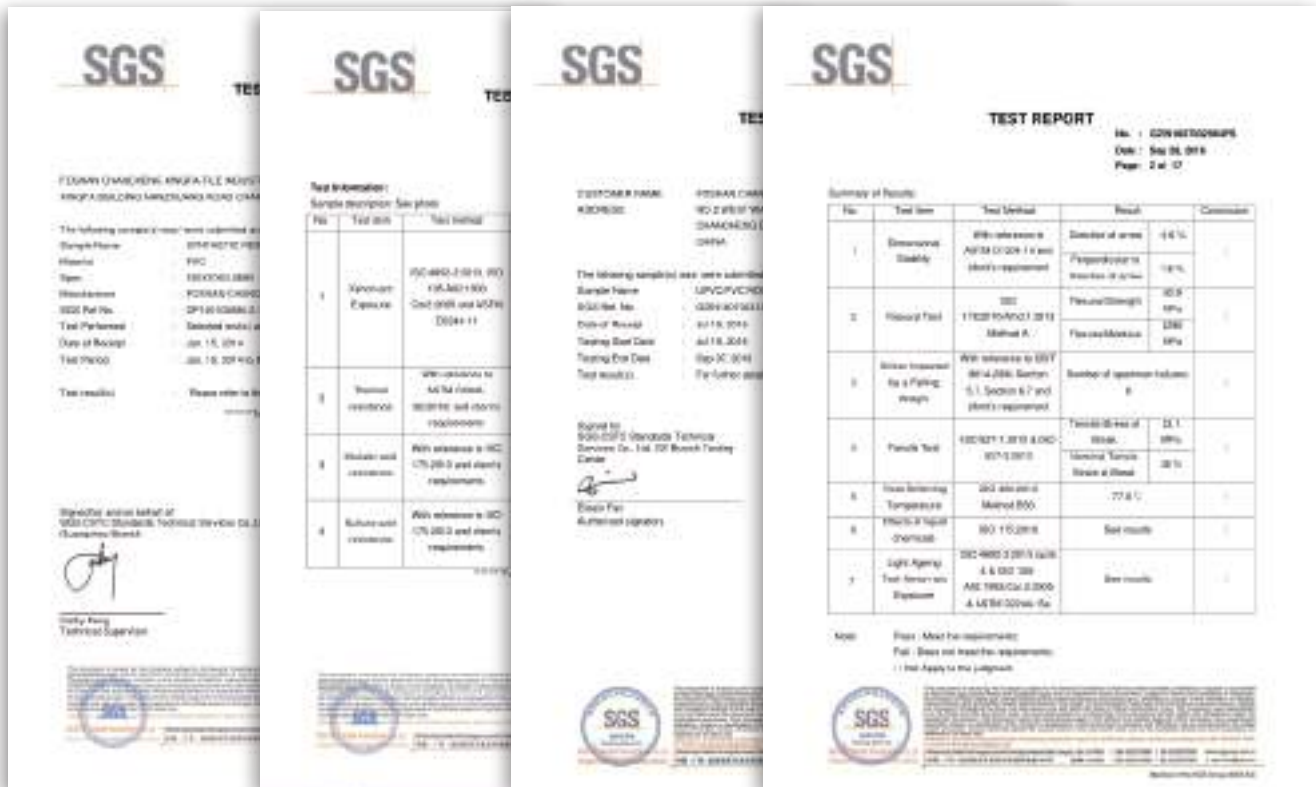
Our products and services are designed to benefit people and improve the quality of life. At the same time, the Group aims to create value through innovation, growth and high earning power. Highly experienced and trained staff has helped us to serve the clients in timely and appropriate manner.

A.D. Global Synergies Private Limited is committed to managing its business in a safe and responsible manner. For us responsibility means economic, environmental and social responsibility, so we work with customers, suppliers, employees, shareholders and the communities around our sites to improve our environmental performance, health, safety and security.

Elastic Plastic Composites, a Brand having the sole purpose of manufacturing products that are both sustainable and made to last. Built upon a strong financial foundation, we're highly regarded throughout the Subcontinent for our unwavering commitment to quality, as well as our creative use of building materials to help keep costs low. Get in touch today to find out more about our product range and everything we have planned for the future.



TECHNICAL FEATURES AND TEST REPORT



Easy to install



Eco friendly



Corrosion proof



Good fire proofing performance



Noise and sound proof



Light weight



Insulation properties



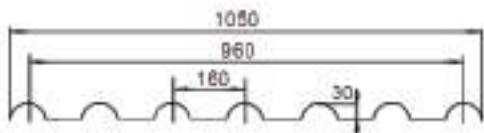
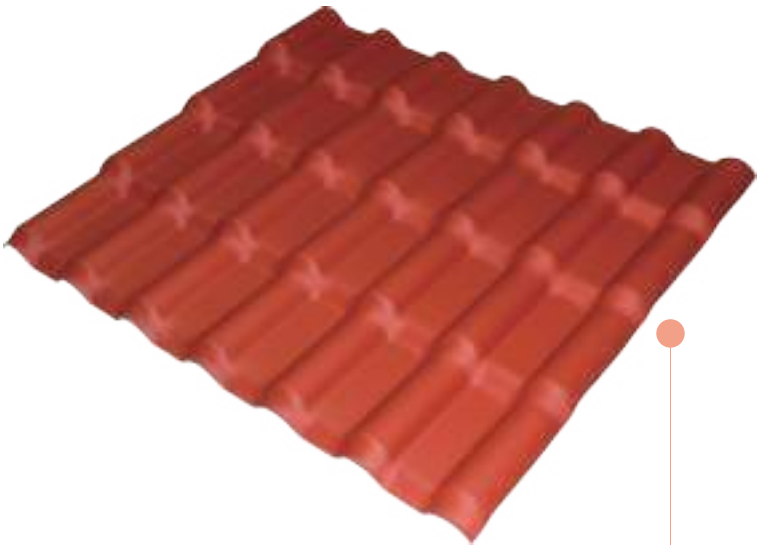
Excellent weather resistance



ELASTIC SPANISH ROOFING SHEET

SPECIFICATION

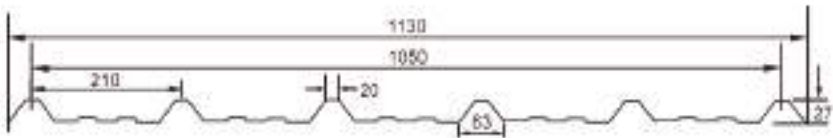
Elastic Spanish Roofing Sheets are a new generation of light-weight, environment-friendly building material. The best replacement to contemporary metal sheets, Elastic Spanish Roofing Sheets offer longer lifespan, cost effectiveness and a better aesthetic look.



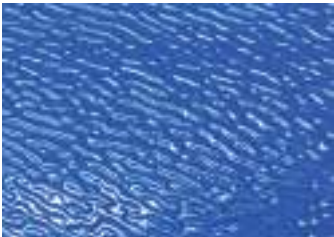
SPANISH 1050 ASA Synthetic Resin Roof Sheet	
Length	Can be customized
Width	1050 mm
Available width	960 mm
Thickness	2.5mm
Burning Test	≥B2, fire-retardant
Flexural Strength	72 Mpa
Tensile Strength	30Mpa
Chemical Resistance Performance	Free Permanent Corrosion or Deformation
Application	Warehouse, Factory, Boundary Wall, Partitions, Farm,etc.
Color life	10 years
Service life	25 years



ASAPVC ROOF SHEET



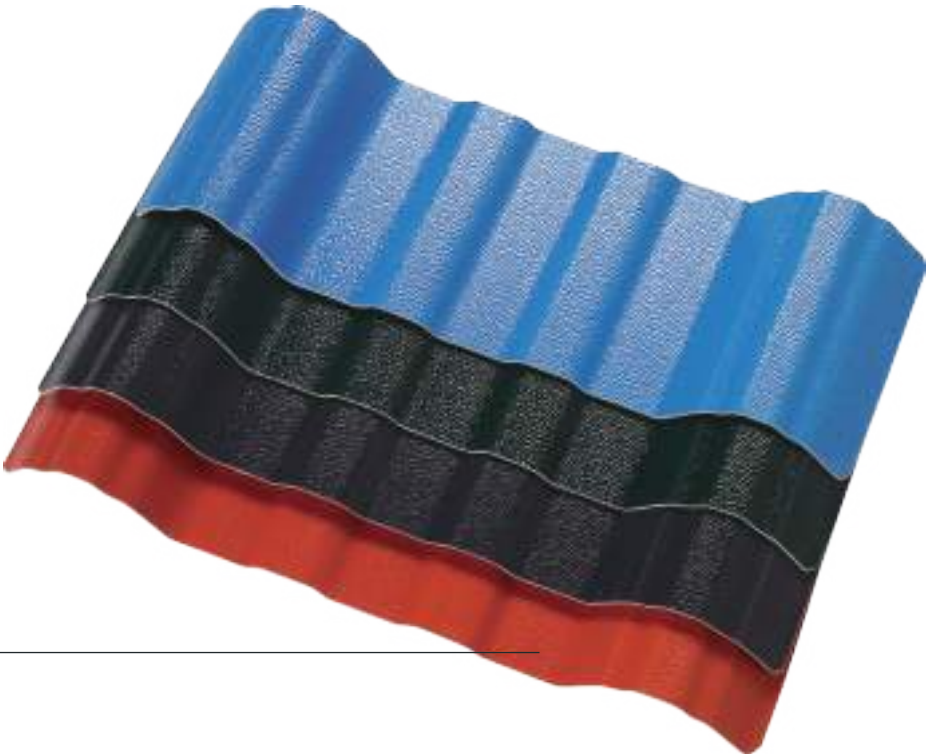
SPANSIH 1050 ASA Synthetic Resin Roof Sheet	
Length	Can be customized
Width	1130 mm
Available width	1050 mm
Thickness	2.0mm
Burning Test	≥B2, fire-retardant
Alkali/Acid-resistance	Warehouse, Factory, Boundary Wall, Partitions, Farm,etc.
Application	Steel plant, Warehouse, Farm,Carport, etc
Color life	10 years
Service life	25 years



Blue



Brick Red



COLOR _____

ELASTIC DAYLIGHTING ROOFING SHEET

Daylighting 1050	
Length	Can be customized
Width	1050 mm
Available width	960 mm
Thickness	2.0mm
Application	Green house, Garden, daylighting,etc



● DAYLIGHTING 1050



● DAYLIGHTING 1050

ELASTIC TRANSLUCENT ROOFING SHEET

PVC TRANSLUCENT ROOF SHEET	
Length	Can be customized
Width	1130 mm
Available width	1050 mm
Thickness	1.5mm
Application	Green house, Garden, daylighting,etc



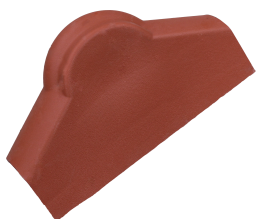




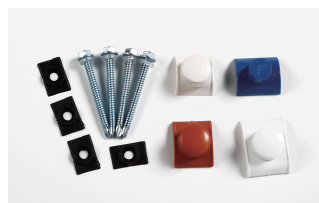


● PVC TRANSLUCENT ROOF SHEET



● PVC TRANSLUCENT ROOF SHEET

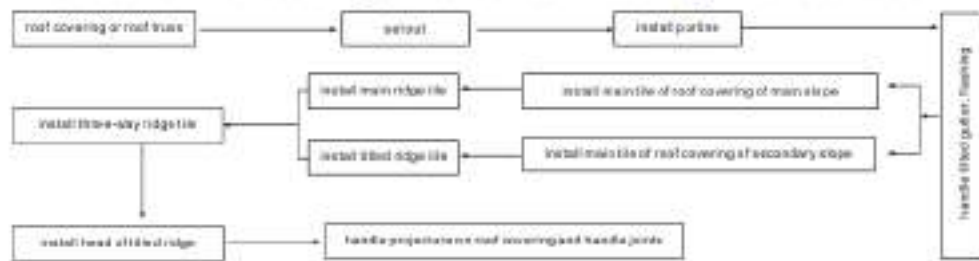
ACCESSORIES

<ul style="list-style-type: none"> • Main Ridge Tile 1050*400*148*2.5 	<ul style="list-style-type: none"> • Tilted Ridge Tile 1050*270*118*2.5 
<ul style="list-style-type: none"> • Head Sealing Tile 280*290*115*2.5 	<ul style="list-style-type: none"> • Endcap of Main Ridge Tile 450*258*100*2.5 
<ul style="list-style-type: none"> • Left hand side eave board 1214*139*114*2.5 	<ul style="list-style-type: none"> • Right hand side eave board 1214*139*114*2.5 
<ul style="list-style-type: none"> • Impact weather board 1050*120*120*2.5 	<ul style="list-style-type: none"> • Waterproof Accessories 



Installation Requirement

Process Flow Chart of Synthetic Resin Roofing Tile Installation



Installation Regulations for Roofing Tile

- The purlin can choose square tube(60mm×40mm×3mm) or C-type steel (100mm×50mm×20mm×3mm) or corrosion proof timber.
- The main tile should be installed in reverse direction according to local wind direction with transverse overlap of a tile wave and longitudinal overlap of at least a pitch, in addition, the lower part of the overlap mount should be supported by a purlin.
- While installing the main ridge tile, installing should be carried out after a section of the first ridge tile is truncated to prevent water seepage from the overlap of the tiles due to large gap.
- Main ridge tile and tilted ridge tile should be sawed to level state at the overlap location and the Tee is installed after installing the main ridge tile and tilted ridge tile. The slope angle should be considered while installing the ridge tile to avoid water leakage due to too low gradient.
- The fixed parts are dedicated parts. Pre-drilling should be carried out before fixing, the bore diameter should be 2mm bigger than the screw diameter.
- It is suggested to use 6.3mm diameter tapping screw.

Installation principles of PVC tile

- For the installation of PVC tile, the proper purlin span shall be selected to prevent the deformation of the plate, water leakage and cracking. Specific references are as follows: For the PVC tile ≤2.0mm, the purlin span on the sloping roof shall be ≤800mm and the purlin span on the circular arc roof shall be ≤900mm by suggestion
- For the transverse lap joint of the trapezoidal waveform tile, 1 wave shall be overlapped, and the longitudinal overlapping length is >250mm;
- In case of the self-tapping screw for fixing, the drilling must be carried out in advance, and the diameter of the drill hole must be more than the diameter of the fixed screw for 2 to 3mm
- 4.The screw must be installed at the wave peak to prevent the water leakage.

Application

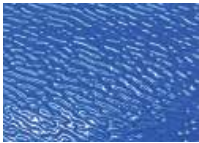
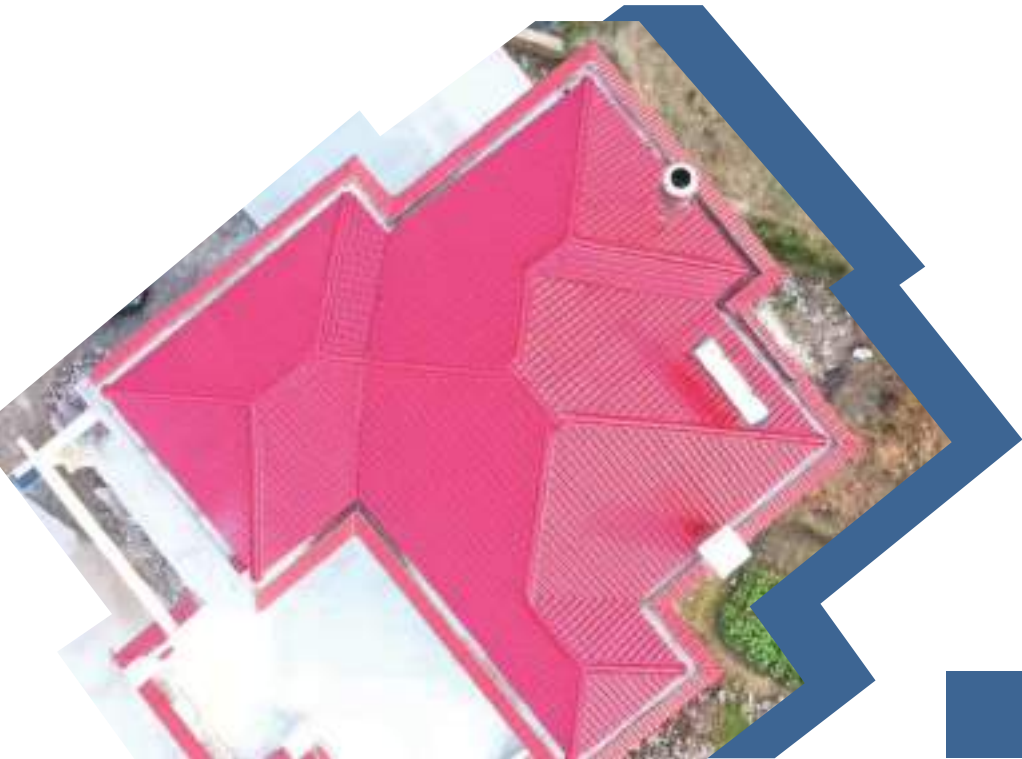


● Spanish 1050



● asa pvc roof tile





Blue



Brick Red

Application



CONTACT US

EMAIL: info@adglobalsynergies.com

OS: www.elasticcomposites.com

TEL: +91 8585933666

A. D. Global Synergies Private Limited

